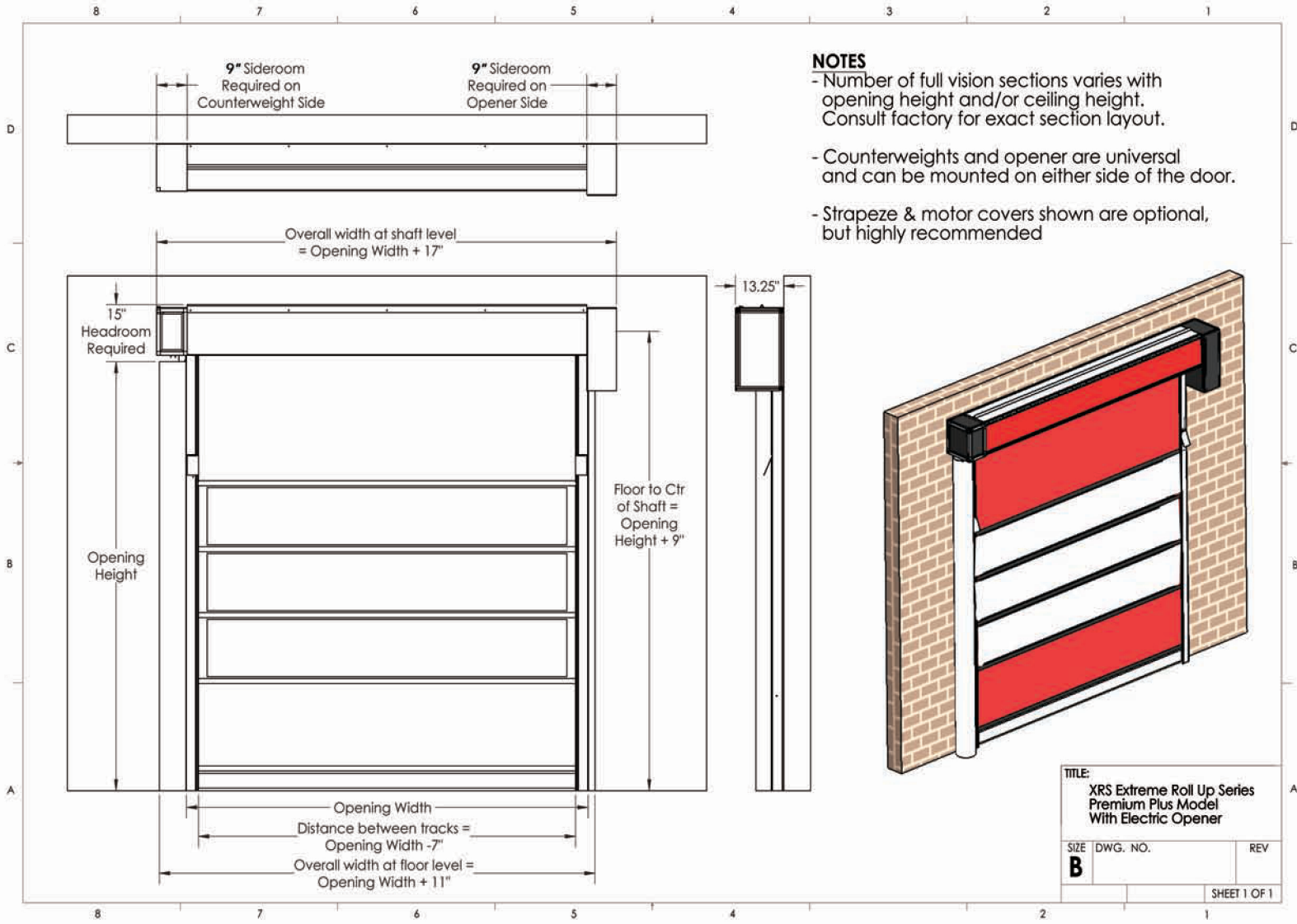


PREMIUM PLUS ELECTRIC



NOTES

- Number of full vision sections varies with opening height and/or ceiling height. Consult factory for exact section layout.
- Counterweights and opener are universal and can be mounted on either side of the door.
- Strapeze & motor covers shown are optional, but highly recommended



TITLE:
**XRS Extreme Roll Up Series
 Premium Plus Model
 With Electric Opener**

SIZE DWG. NO. REV

B