



AIRLIFT DOORS, INC.



CAR WASH

car wash entrance

CLEARANCE 7'

Quality
craftsmanship
and a name
you can trust.

Fast, Reliable & Simple.

XRS

VINYL ROLL UP DOOR
PRODUCT CATALOG

www.AirliftDoors.com - Call toll free: 1(888)-368-4403 - Fax: 1(612)-588-7660

INDEX

XRS Vinyl Roll Up Door Features.....	Page 1
XRS Vinyl Roll Up Door Packages.....	Page 2
XRS Operator Options.....	Page 3
XRS Sections Only.....	Page 4
XRS Panels & Components.....	Page 5
XRS Track.....	Page 6
XRS Strapeze Counterbalance System.....	Page 7
XRS Openers & Controls.....	Page 8-9
XRS Door Shop Drawings.....	Page 10-13
XRS Engineering Forms.....	Page 14-15
Terms & Conditions.....	Page 16
Credit Application.....	Page 17

WARRANTY

XRS Panels.....	3 Year
Windbars.....	3 Year
Track.....	3 Year
Door Components.....	3 Year
Electric Motor.....	1 Year
Control Components.....	1 Year
Photo Eyes.....	1 Year

All components of our door packages are covered for a minimum of one year. Please see individual product breakdowns for individual part warranties. No parts will be accepted to the factory as a return without a Return Goods Authorization from Airlift Doors. The RGA# must be written on the outside of the box when returned. No freight or labor will be paid on any warranty parts unless pre-arranged and approved by Airlift Doors Inc.



FAST, RELIABLE, SIMPLE

The XRS Door Features:

- Intermediate 40ML clear full vision panels standard, option for bottom
- 22oz vinyl solid color panels
- Complete weather seal included
- Speeds adjustable up to 34" per sec.
- Corrosion resistant components
- Low maintenance design
- Individually replaceable components



Safety Features on the XRS Door

This door has the ability to breakaway from the door track and automatically reset itself upon impact.

The XRS Premium Model has an emergency pull rope that allows the door to open in case of a power failure.



RED



YELLOW



NAVY



ROYAL BLUE



BLACK



BEIGE



FOREST GREEN



BROWN



GREY

So Many Color Options!

The XRS Door comes in many different colors allowing you to customize the look of your bay or car wash.

Actual color may vary slightly from the color shown. Consult factory for colored vinyl swatch.

www.AirliftDoors.com

1(888)-368-4403

All **XRS** Extreme Roll Up Door Packages include these standard features:



Intermediate full vision panels standard, option for bottom

Complete weather seal with:

- Heavy duty top rubber seal
- Dual side vinyl seals

Individually replaceable sections

Inside or Outside Mount

All stainless steel hardware

Breakaway design with automatic reset

Fiber reinforced pultruded plastic track

XRS Vinyl Door Packages

Elite Plus Model

- Includes all standard features
- 24" per sec. maximum speed
- No counterbalance system
- Requires 110v power source

Operator Options:

Electric Operator Only

Premium Plus Model

- Includes all standard features
- 34" per sec. maximum speed
- Patented Strapeze Counterbalance System
- Requires 110v power source

Operator Options:

Electric Operator

Chain Hoist

XRS Electric Motor Features: (Available for Elite & Premium Models)



XRS Electric Motor:

- 3 phase, 240V motor, powered by 110V controller
- Corrosion resistant components
- Built in limit switches
- No cooling fan needed
- Rated for up to 80 cycles per hour
- Individually replaceable components



XRS Controller features:

- VFD (Variable Frequency Drive) for adjustable speeds
- 110V controller converts power to 3 phase, 240V output for motor
- 20 amp dedicated breaker per opener required
- Built in 24VDC control circuitry
- Nema 4X rated waterproof enclosure
- Internal circuit breakers
- UL listed
- Optional safety eyes & auto closing timer

XRS Manual Lift Option: (Available for Premium Model Only)



- Economical option for XRS door
- Simple chain hoist operation
- No electrical required
- Interior mount
- Fits on all size XRS doors
- Requires Strapeze Counterbalance System
- Simple installation
- 1 year warranty



XRS SECTIONS ONLY 10' HIGH DOOR

PN# R0210X10SO 9'10" x 10'

PN# R0212X10SO 11'10" x 10'

PN# R0214X10SO 13'10" x 10'

* Windbars and shaftline sold separately.



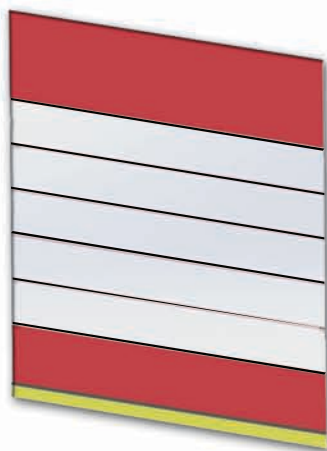
XRS SECTIONS ONLY 12' HIGH DOOR

PN# R0210X12SO 9'10" x 12'

PN# R0212X12SO 11'10" x 12'

PN# R0214X12SO 13'10" x 12'

* Windbars and shaftline sold separately.



XRS SECTIONS ONLY 14' HIGH DOOR

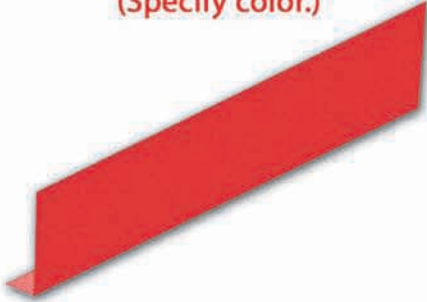
PN# R0210X14SO 9'10" x 14'

PN# R0212X14SO 11'10" x 14'

PN# R0214X14SO 13'10" x 14'

* Windbars and shaftline sold separately.

VINYL COVER ONLY
(Specify color.)



PN# R06R3000 10' COVER
PN# R06R3001 12' COVER
PN# R06R3002 14' COVER

TOP SOLID PANEL
(Specify color.)



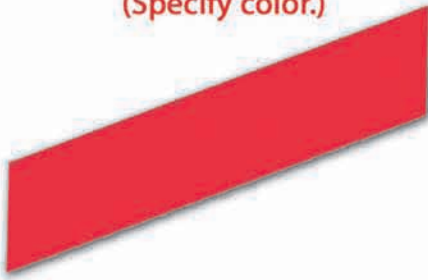
PN# R02IS1070 9'10" x 70"
PN# R02IS1270 11'10" x 70"
PN# R02IS1470 13'10" x 70"

CLEAR FULL VISION PANELS



PN# R02FV1018 9'10" x 18"
PN# R02FV1024 9'10" x 24"
PN# R02FV1218 11'10" x 18"
PN# R02FV1224 11'10" x 24"
PN# R02FV1418 13'10" x 18"
PN# R02FV1424 13'10" x 24"

BOTTOM SOLID PANEL
(Specify color.)



PN# R02IS1024 9'10" x 24"
PN# R02IS1224 11'10" x 24"
PN# R02IS1424 13'10" x 24"

BOTTOM YELLOW SECTION
INCLUDES SAND TUBE



PN# R02BSO106 9'10" x 6"
PN# R02BSO126 11'10" x 6"
PN# R02BSO146 13'10" x 6"

WINDBARS



PN# R04R1000 9'10"
PN# R04R1200 11'10"
PN# R04R1400 13'10"
PN# R04R0001 4 PINS/BAR-10' & 12'
8 PINS/BAR-14'

COVER SUPPORT BAR
SINGLE - 3 per Door



PN# R06R3030 119-3/4"
PN# R06R3031 143-3/4"
PN# R06R3032 167-3/4"

COVER SUPPORT BAR
DOUBLE - 1 per Door



PN# R06R3060 119-3/4"
PN# R06R3061 143-3/4"
PN# R06R3062 167-3/4"

TOP ALUMINUM COVER
1 per Door



PN# R06R3005 10'
PN# R06R3006 12'
PN# R06R3007 14'



XRS FIBER REINFORCED TRACK

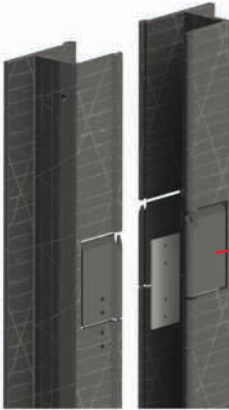
Bearing plates not included. Specify Left or Right

PN# R03R1082 8' 2" TRACK

PN# R03R1102 10' 2" TRACK

PN# R03R1122 12' 2" TRACK

PN# R03R1142 14' 2" TRACK



XRS TRACK RESET DOOR

PN# R03R3003 Specify Left or Right

TRACK COMPLETE PAIR

Bearing plates not included.

PN# R03R1282 8' 2" TRACK

PN# R03R1202 10' 2" TRACK

PN# R03R1222 12' 2" TRACK

PN# R03R1242 14' 2" TRACK

GETTING NEW/ADDITIONAL PHOTO!

TRACK RESET HINGE



PN# R03R3002

FIBER RESET BRACKET



PN# R03R3001 - LH
PN# R03R3000 - RH

OPENER ROPE GUIDE BRACKET



PN# R08R2002

TOP RUBBER SEAL



PN# R10R1001 10'
PN# R10R1002 12'
PN# R10R1006 14'

SIDE VINYL SEAL



PN# R10R1003

BEARING PLATE SS LH



PN# R05R2100

BEARING PLATE SS RH

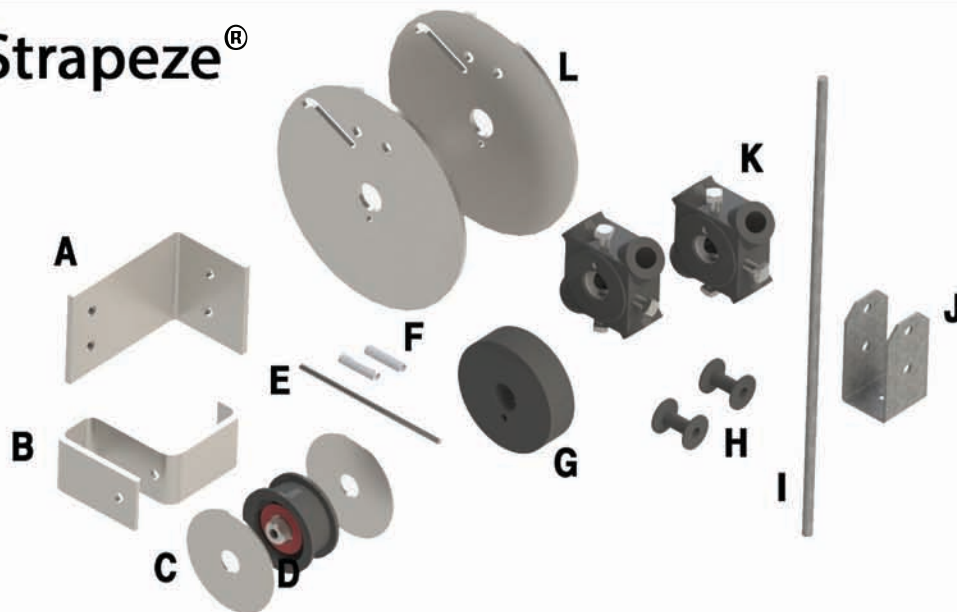


PN# R05R2101

FOR MORE INFORMATION
ON XRS PARTS, PLEASE
CALL OUR EXPERIENCED
SALES TEAM.
1-888-368-4403

- A: PN# R07R2002 STRAPEZE PULLEY BRACKET
- B: PN# R07R2006 STRAPEZE PULLEY CLEVIS
- C: PN# R07R2005 STRAPEZE PULLEY DISK
- D: PN# R07R3002 STRAPEZE PULLEY
- E: PN# D04R1008 STRAPEZE PIN
- F: PN# O02R9405 STRAPEZE DISK SLEEVE
- G: PN# R07R3001 STRAPEZE START SPACER
- H: PN# D04R1013 STRAPEZE SPOOL
- I: PN# D04R1014-1017 STRAPEZE ROD
- J: PN# D04R1012 STRAPEZE SADDLE BRACKET
- K: PN# D04R4022 NICKEL PLATED WINDING HUB
- L: PN# R07R2001 STRAPEZE GUIDE DISK

Strapeze®



STRAPEZE COVER



PN# R13R1001
Specify Left or Right

STRAPEZE GUIDE TUBE BRACKET



PN# R07R2003

STRAPEZE GUIDE TUBE ONLY



- PN# D04R1025 10' HIGH DOOR
- PN# D04R1028 12' HIGH DOOR
- PN# D04R1030 14' HIGH DOOR

SHAFTLINE WITH TUBE



- PN# R05R2010 10' WIDE DOOR
- PN# R05R2012 12' WIDE DOOR
- PN# R05R2014 14' WIDE DOOR

XRS STRAPEZE STRAP



- PN# R07R1080 AW-B-80-0-0
- PN# R07R1106 AW-B-106-0-0
- PN# R07R1130 AW-B-130-0-0
- PN# R07R1154 AW-B-154-0-0



AIRLIFT DOORS, INC.

XRS

Extreme Roll Up Series

XRS MOTOR COMPLETE W/ CONTROLS



PN# R08R5000 **ELITE**
PN# R08R5000 **PREMIUM**

XRS GEAR HEAD AND MOTOR



PN# R08R5006 **ELITE**
PN# R08R5006 **PREMIUM**

XRS GEAR HEAD ONLY



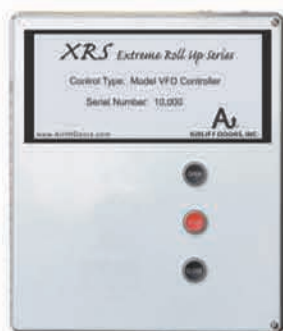
PN# R08R5001-WR
WITH ROPE
PN# R08R5001-NR
NO ROPE

XRS MOTOR ONLY



PN# R08R5002

XRS VFD CONTROL BOX



PN# R08R5003 **ELITE**
PN# R08R5003 **PREMIUM**

NEMA 4 3 BUTTON STATION



PN# O15R1010

COMPLETE MOTOR COVER



PN# R13R1000
Specify Left or Right

ELECTRIC OPENER MOUNTING BRACKET



PN# R08R2001
NEED 2 PER OPENER

BANNER EYES



PN# R09R1000
COMPLETE KIT

PN# R09R1001
RECEIVER QS30VR3R

PN# R09R1002
EMITTER QS303E

PN# O18R2002
BRACKET

CHAIN HOIST



PN# R08R6000

XRS

Extreme Roll Up Series



CONTACT BLOCK INCLUDES BASE



PN# O16R1303 **K10(N/O)**
OPEN/CLOSE

PN# O16R1310 **K01(N/C)**
STOP

CONTACT BLOCK



PN# O16R1304 **KC10(N/O)**
OPEN/CLOSE

PN# O16R1309 **KC01(N/C)**
STOP

TITAN BUTTON



PN# O16R1002

BUTTON LENSE



PN# O16R1005 **OPEN**
PN# O16R1004 **CLOSE**
PN# O16R1014 **STOP**

TOGGLE SWITCH



PN# O19R4002

VFD DRIVE



PN# R08R5100
Specify Elite or Premium

13 AMP CIRCUIT BREAKER



PN# R08R5101

2 AMP CIRCUIT BREAKER



PN# R08R5102

POWER SUPPLY 24VDC



PN# R08R5103

LIMIT INTERRUPT TIMER 24 VDC



PN# R08R5104

24 VDC RELAY



PN# R08R5105

XRS RELAY BASE
PN# R08R5108

XRS CLOSING TIMER ADDER

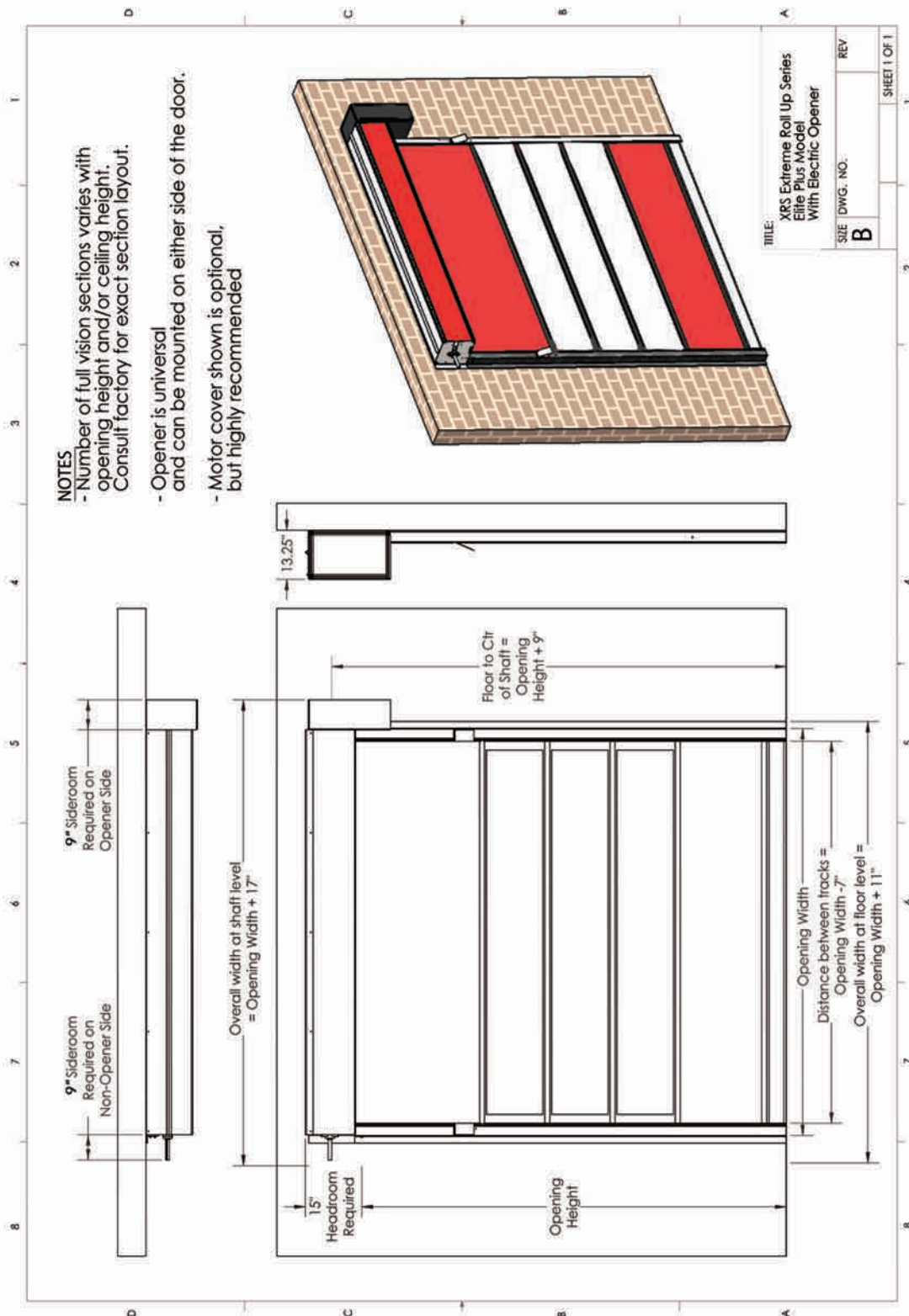


PN# R08R5004

FORMS

XRS ELITE PLUS ELECTRIC SHOP DRAWING

ELITE PLUS ELECTRIC



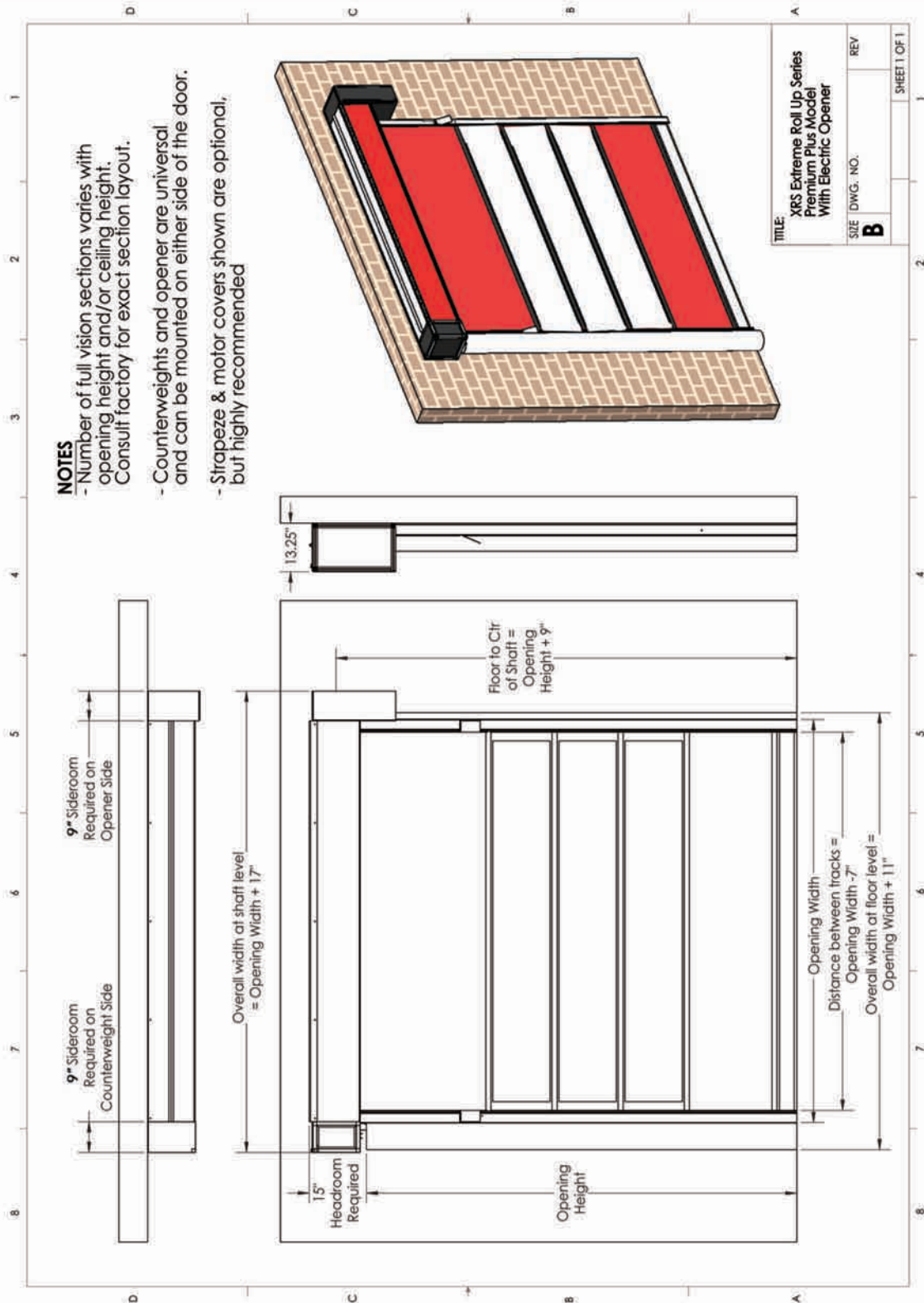


AIRLIFT DOORS, INC.

FORMS

XRS PREMIUM PLUS ELECTRIC SHOP DRAWING

PREMIUM PLUS ELECTRIC



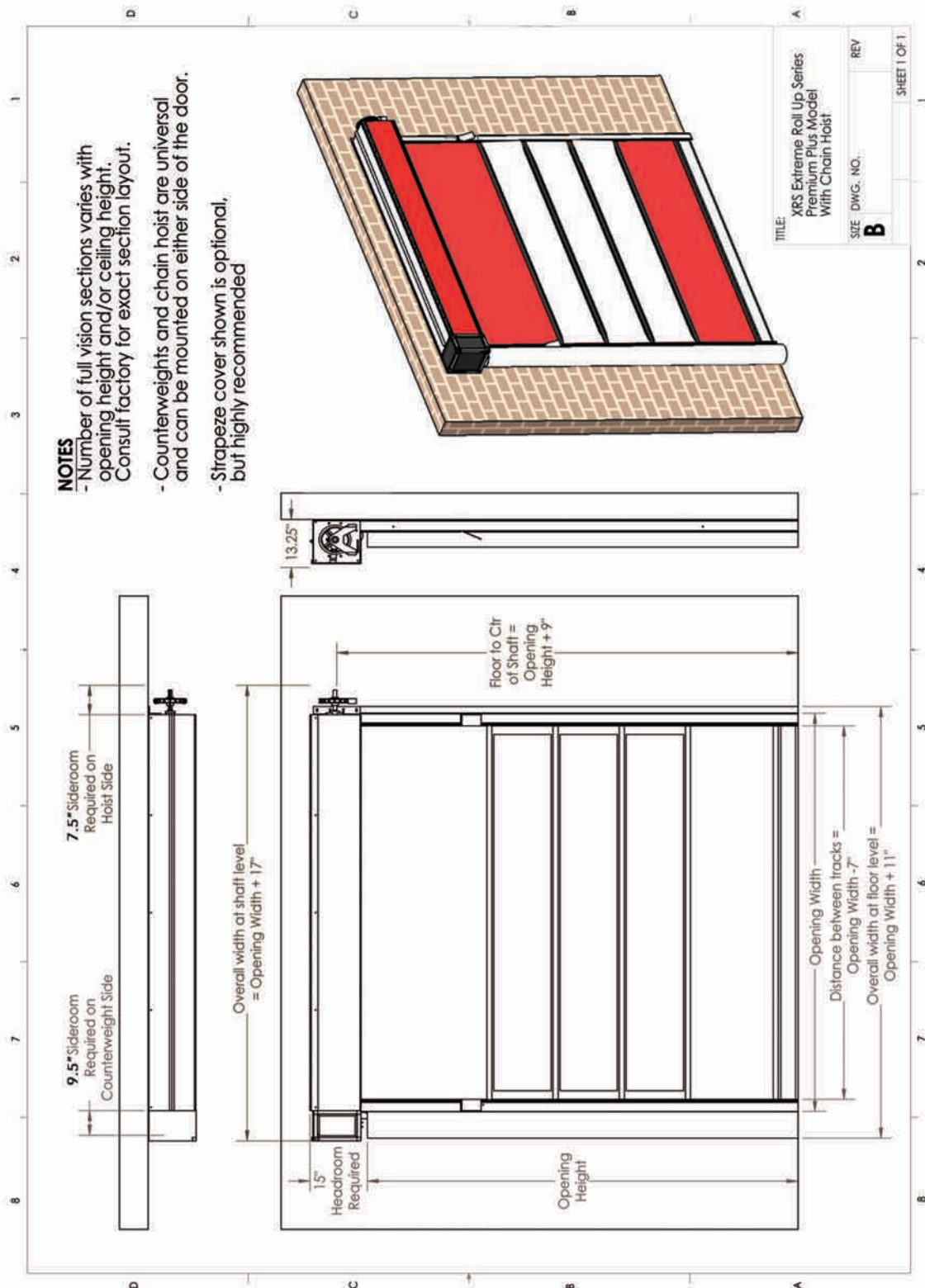
FORMS

XRS PREMIUM PLUS CHAIN HOIST SHOP DRAWING



AIRLIFT DOORS, INC.

PREMIUM PLUS CHAIN HOIST



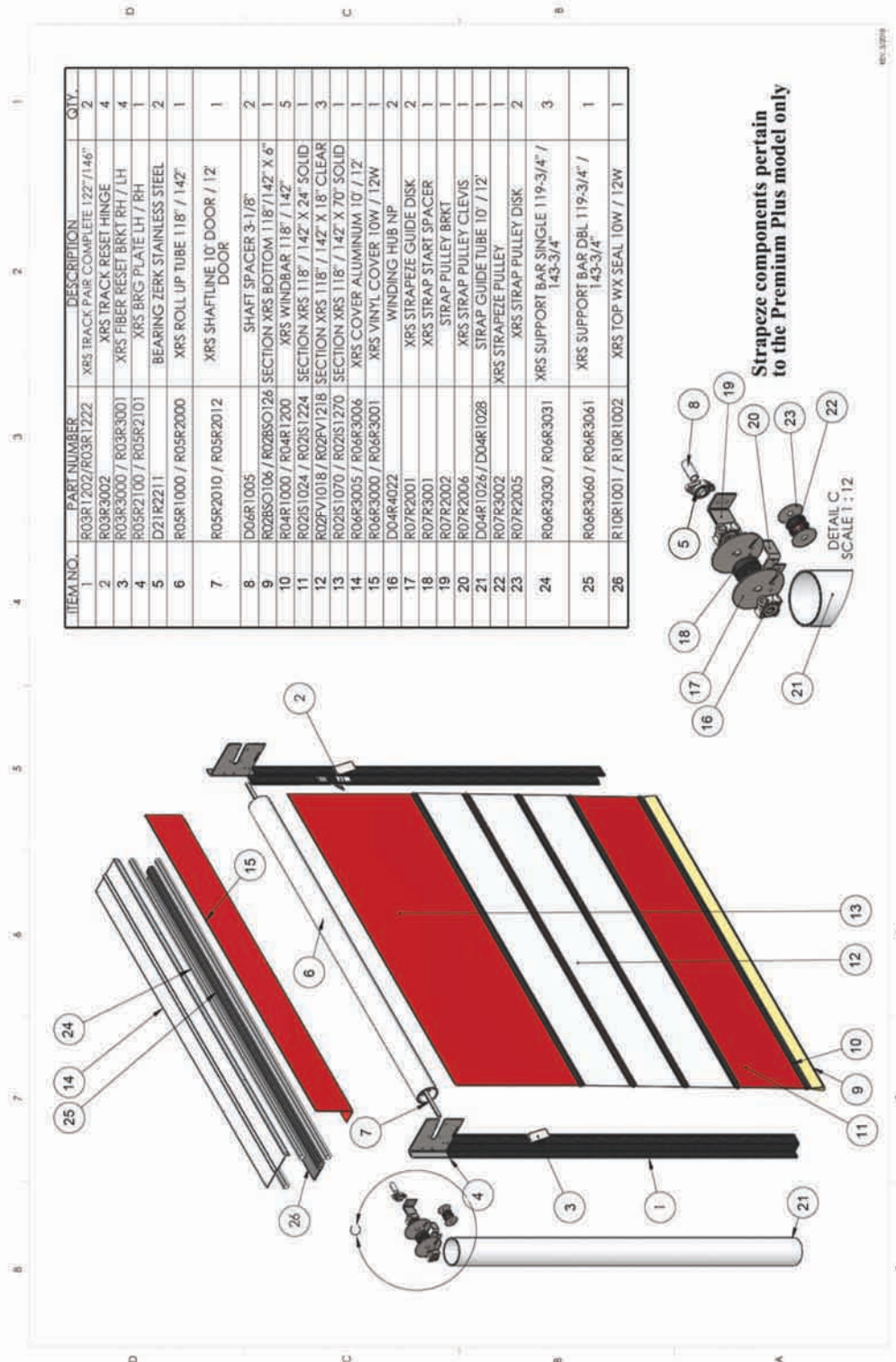


AIRLIFT DOORS, INC.

FORMS

XRS PREMIUM PLUS PARTS DIAGRAM

PREMIUM PLUS PARTS DIAGRAM



ITEM NO.	PART NUMBER	DESCRIPTION	QTY.
1	R03R1202/R03R1222	XRS TRACK PAIR COMPLETE 122"/146"	2
2	R03R3002	XRS TRACK RESET HINGE	4
3	R03R3000 / R03R3001	XRS FIBER RESET BRKT RH / LH	4
4	R05R2100 / R05R2101	XRS BRG PLATE LH / RH	1
5	D21R2211	BEARING ZERK STAINLESS STEEL	2
6	R05R1000 / R05R2000	XRS ROLL UP TUBE 118" / 142"	1
7	R05R2010 / R05R2012	XRS SHAFTLINE 10' DOOR / 12' DOOR	1
8	D04R1005	SHAFT SPACER 3-1/8"	2
9	R02BS0106 / R02BS0126	SECTION XRS BOTTOM 118"/142" X 6"	1
10	R04R1000 / R04R1200	XRS WINDBAR 118" / 142"	5
11	R02S1024 / R02S1224	SECTION XRS 118" / 142" X 24" SOLID	1
12	R02SV1018 / R02SV1218	SECTION XRS 118" / 142" X 18" CLEAR	3
13	R02S1070 / R02S1270	SECTION XRS 118" / 142" X 70" SOLID	1
14	R06R3005 / R06R3006	XRS COVER ALUMINUM 10' / 12'	1
15	R06R3000 / R06R3001	XRS VINYL COVER 10W / 12W	1
16	D04R4022	WINDING HUB NP	2
17	R07R2001	XRS STRAPEZE GUIDE DISK	2
18	R07R3001	XRS STRAP START SPACER	1
19	R07R2002	STRAP PULLEY BRKT	1
20	R07R2006	XRS STRAP PULLEY CLEVIS	1
21	D04R1026 / D04R1028	STRAP GUIDE TUBE 10' / 12'	1
22	R07R3002	XRS STRAPEZE PULLEY	1
23	R07R2005	XRS STRAP PULLEY DISK	2
24	R06R3030 / R06R3031	XRS SUPPORT BAR SINGLE 119-3/4" / 143-3/4"	3
25	R06R3060 / R06R3061	XRS SUPPORT BAR DBL 119-3/4" / 143-3/4"	1
26	R10R1001 / R10R1002	XRS TOP WX SEAL 10W / 12W	1



AIRLIFT DOORS, INC.

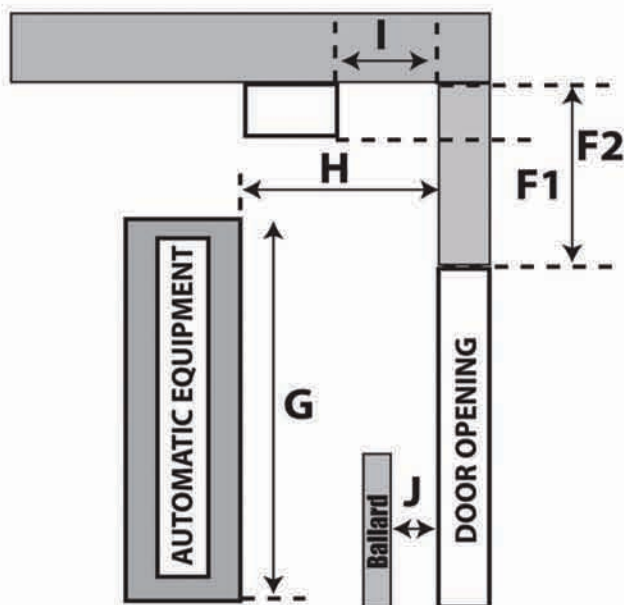
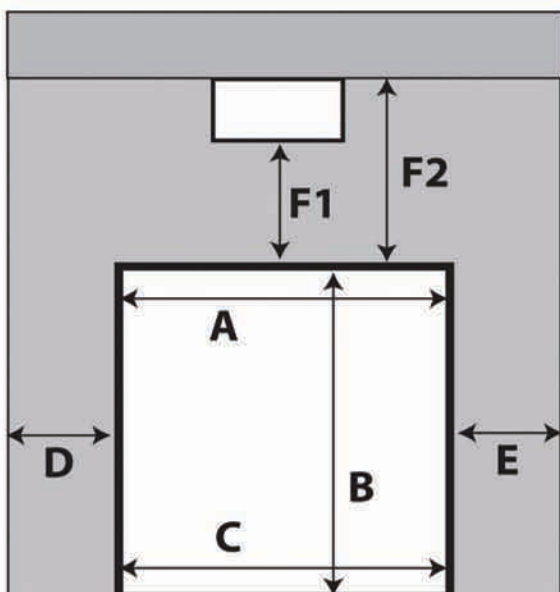
XRS ROLL UP DOOR ENGINEERING FORM

400 State Hwy 55 • Maple Lake, MN 55358
www.AirliftDoors.com 1-888-368-4403

PLEASE CIRCLE ONE

ENTER / EXIT / BOTH DOORS

If any measurements vary please fill out a measurement form for each door opening.



A: Top Opening Width _____

B: Finished Opening Height _____

C: Bottom Opening Width _____

D: Left Sideroom _____

E: Right Sideroom _____

F1: Headroom to Obstacle _____

F2: Headroom to Ceiling _____

G: Equipment Height _____

H: Backroom to Equipment _____

I: Backroom to Obstacle _____

J: If ballards exist please provide measurement

from ballard to wall _____

Interior or Exterior Mount: _____

Wall Material Mounting Track To: _____

Motor Mounted On: Driver Side / Passenger Side

Door Model: Premium w/Counterweights

OR Elite w/o Counterweights

Color: _____

By signing below I understand that the doors will be engineered specifically to the measurements I have supplied on this form. I take full responsibility for all information supplied on this form.

Reference Quote # _____

Signed by: _____

Date _____

AIRLIFT DOORS, INC.
XRS ROLL UP DOOR
CONVEYOR CUT-OUT DIAGRAM

VIEW IS STANDING INSIDE THE
BAY LOOKING OUT

ENTER THE APPLICABLE
MEASUREMENTS

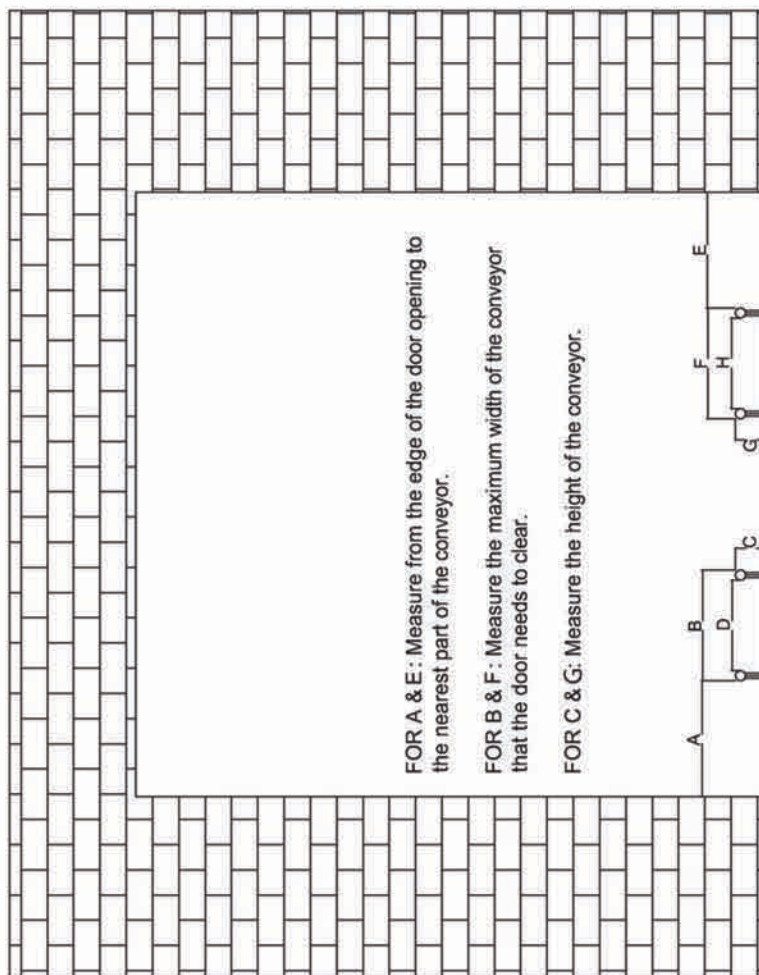
- A. _____ (Outside Width)
B. _____ (Outside Width)
C. _____ (Inside Width)
D. _____ (Inside Width)
E. _____ (Outside Width)
F. _____ (Outside Width)
G. _____ (Inside Width)
H. _____ (Inside Width)


OTHER DOOR INFORMATION

I: ENTER OR EXIT DOOR

J: INTERIOR OR EXTERIOR MOUNT

K: CUT OUT NEEDED ON DRIVER'S SIDE,
PASSENGER SIDE, OR BOTH



 Airlift Doors, Inc. 400 State Hwy 55 Maple Lake, MN 55358 1-888-368-4403	XRS Roll-Up Door All Models
	Conveyor Cut-Out Diagram 10/25/10

TERMS



AIRLIFT DOORS, INC.

The following terms are general terms and conditions of sale and shipment. All conditions of sales are subject to change and are valid as determined by the latest terms and conditions printed by Airlift Doors, Inc. (referred to herein after as The Company).

1. Quotations: All quotations are only valid if written by an authorized representative of The Company. Written quotations are valid for 30 days unless terminated sooner by notice. Quotations are based solely on information provided by our customers or our interpretation of plans provided. It is the responsibility of the purchaser to verify that the information is correct.

2. Acceptance of orders: Orders may be placed through the following means: a) Purchaser may sign a written quote provided by The Company. b) Purchaser may issue a purchase order to The Company with a signature of person verifying the order. c) Orders may be placed verbally if the amount is equal to or less than \$1,000.00. However, it is the responsibility of the purchaser to get a verbal confirmation from The Company deeming the information accurate. All orders must include, at a minimum, the following information: Completed measurement sheet provided by The Company (for all door and operator orders), a detailed description of all products ordered, quantity of items, price, requested delivery date, and shipping instructions. All orders are subject to final acceptance by The Company and are subject to The Company's terms and conditions in effect at the time of acceptance.

3. Change Orders: All change orders must be in writing and a signed revised quotation is required for all orders containing a complete door, operator, or heater package.

4. Terms-Regular: Terms to purchasers of satisfactory credit are: 30 days net from the date of invoice. Cash discounts, when applicable, are noted on the face of The Company's invoice. All new customers must include credit references with the first order and will be required to send a certified check, money order, or provide a credit card (Visa, MasterCard, American Express) before order will be shipped. Finance charges of 1-1/2% will apply per month for all past due invoices. NSF checks will be charged a \$30.00 service fee. We reserve the right to withhold shipments/deliveries should any invoice go beyond our specified terms.

5. Special Order Product: All special order product (deemed as any product not stocked by The Company) will require a 50% down payment before any product may be ordered or manufactured by The Company. Special orders are non cancelable and non returnable.

6. Pricing: All prices are F.O.B. Factory, (Minneapolis, Maple Lake or Vendor Facility). All prices shown in price lists are list prices in US Dollars and are subject to current discount rates. Customers are responsible for any and all bank charges associated with remitting payment. Prices are subject to change without notice.

7. Minimum Billing: Orders amounting to less than \$25.00 will only be accepted if charged to a current credit card.

8. Shipping Terms: All shipments are FOB Factory, (Minneapolis, Maple Lake or Vendor Facility). The Company may ship via UPS or common carrier depending on the size and weight of the product. All orders will be assessed a charge for basic commercial packaging. Customers may also request special packaging at an additional charge. Export packaging will be charged at an additional rate based on the requirement and the purchaser is responsible for any applicable export license and all associated costs involved with said license on any export project.

9. Return Goods: No product will be accepted without an RGA # authorized by The Company. Warranty returns will be inspected and credited or replaced at the discretion of The Company. Any new items that are returned within 30 days will be accepted with a 15% restocking fee. Purchaser is responsible for cost of shipping and insurance on any products returned. Credits will be issued at the price paid when the product was sold less any shipping charges associated with the return and applicable restocking fee.

10. Responsibility and Title: Title in the product shall remain with The Company as security only and until full payment is received by The Company. Risk of loss for the product shall pass to the purchaser upon shipment from F.O.B. point of shipment.

11. Cancellation of Orders: Prior to shipment, all orders other than special orders may be cancelled. However, purchaser will be responsible for any engineering, production, packaging, or staging costs involved with the order until the date that The Company is notified in writing of the cancellation.

12. Freight Damage or Loss: It is the responsibility of the purchaser to inspect the product received for accurate piece counts or any visible damage. In case of damage or shortage, the purchaser should note the information on the bill of lading and immediately file a claim with the shipping company.

13. Warranty: See individual product warranties. The Company will assume no responsibility for any labor charges unless agreed upon in writing in advance. The Company's liability with respect to this agreement or the sale of the product shall be limited to the amount paid by the purchaser for the products.

14. Force Majeure: The Company shall not be liable for any delays in shipment or damage to product caused by fire, flood, accident, riots, sabotage, governmental interference, strikes, or any other causes beyond The Company's control.

15. Lead Times: General lead times for stock items are as follows: 1) Parts orders may ship same day if received by The Company before 2:00 P.M. Central Time. Next Day Air or other rush services are available upon the request of the purchaser for additional charges. 2) Door and operator packages typically will ship within 3-4 weeks of receipt of the order and measurement form.

16. Laws of Minnesota: The Customer agrees that all transactions between the Company and the Customer will be governed by the laws of the State of Minnesota and any dispute arising from this relationship will be litigated exclusively in state court in Hennepin County, State of Minnesota. The Customer consents to the jurisdiction of Minnesota court. In the event that it becomes necessary for the Company to institute suit or otherwise incur collection costs to collect any amount due by to the Company by the Customer, the Customer agrees to pay those costs of collection, including reasonable attorneys fees.

Company Name:

Billing Address:

Shipping Address:

Phone:
E-Mail:

Web Address:

Circle One: **Sole Proprietorship** **Corporation** **Partnership**

Business Type:
Federal Tax ID #:

Years In Business:
Signer's SSN #:

Purchasing Contact:
Purchasing Email:

Accounts Payable Contact:
Accounts Payable Email:

Trade References:

#1	#2	#3
<input type="text"/>	<input type="text"/>	<input type="text"/>
<input type="text"/>	<input type="text"/>	<input type="text"/>
<input type="text"/>	<input type="text"/>	<input type="text"/>
<input type="text"/>	<input type="text"/>	<input type="text"/>

Terms: All orders are invoiced at the time of shipment. Balance on all orders is due in 30 days, subject to a 1.5% finance charge per month on any unpaid balance over 30 days.

I hereby authorize the above named firms to furnish information requested by Airlift Doors, Inc. to process this application. I also, in my individual capacity (even though I may place a title or other designation next to my signature), unconditionally guarantee and promise to pay to Airlift Doors, Inc. all indebtedness arising from or relating to this application, and any and all collection fees or costs associated with collection of said debt.

Signature: _____ Date: _____

Print Name: _____ Title: _____

Call toll free: 1 (888)-368-4403
Fax: 1 (612)-588-7660
Online: www.AirliftDoors.com

Airlift Doors Inc.
400 Highway 55
Maple Lake MN, 55320