

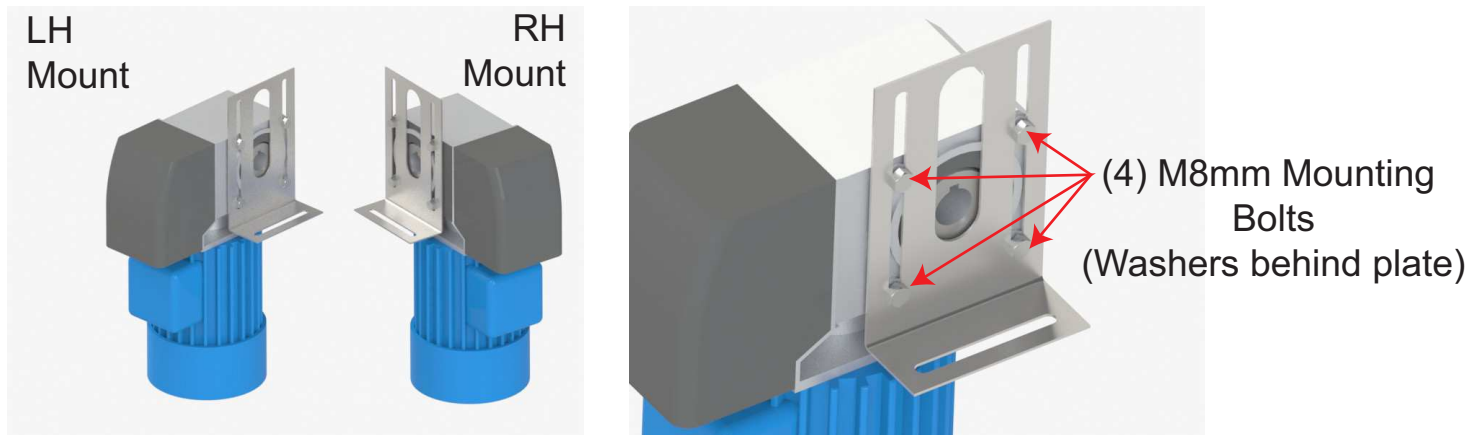
# Airlift Doors, Inc.

## Installation Guide for Overhead Door Waterproof - Electric Opener

1-1: Choose left hand or right hand mounting direction. Some items to consider are:

- Sideroom availability
- Proximity to a 120v power source
- Availability of extended door shaft on either side

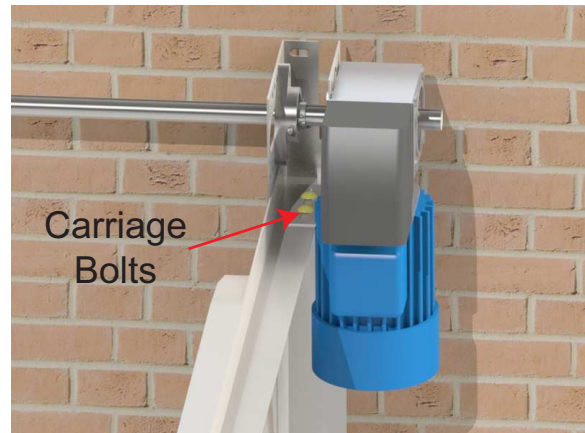
1-2: Using the (4) flat washers & (4) 8mm mounting bolts, attach the mounting bracket to the opener as shown below. Place the washers in between the opener and the mounting bracket to act as spacers. Do not tighten the mounting bolts yet.



\*\*Please note that a right hand mount will be shown for the remainder of this guide.

1-3: Slide the opener onto the door shaft with the mounting bracket towards the door as shown below.

1-4: Using (2) 3/8" carriage bolts and (2) 3/8" nuts, fasten the mounting bracket to the horizontal track as shown below.



1-5: Rotate the door shaft with a vice grip until the keyway of the shaft is in line with the key slot in the opener. (FIG. 1A)

1-6: Insert the opener key into the keyway and key slot and push it in until approximately 1/4" is sticking out. (FIG's. 1B & 1C)

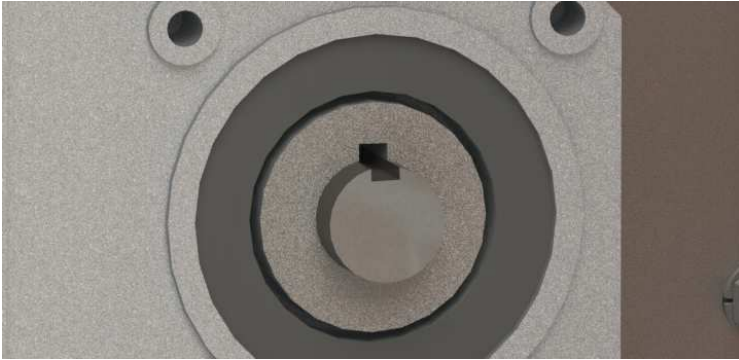


FIG. 1A



FIG. 1B



FIG. 1C

1-7: Slide the 1" shaft collar onto the end of the shaft. Push it against the key and tighten the collar set screw. (FIG. 1D)

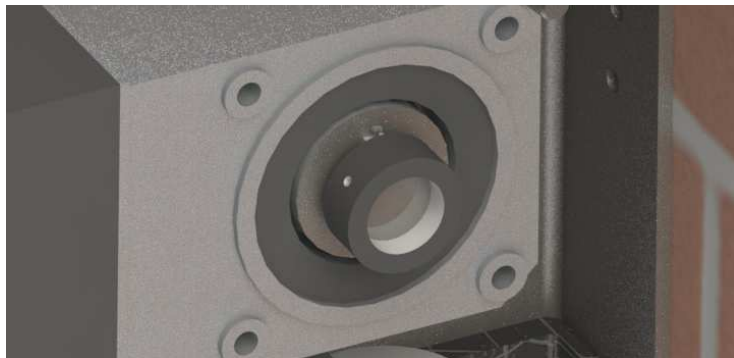


FIG. 1D

1-8: Mount the control box in the desired location and complete all wiring connections as shown on the wiring diagram on the next page before moving on to step 2.

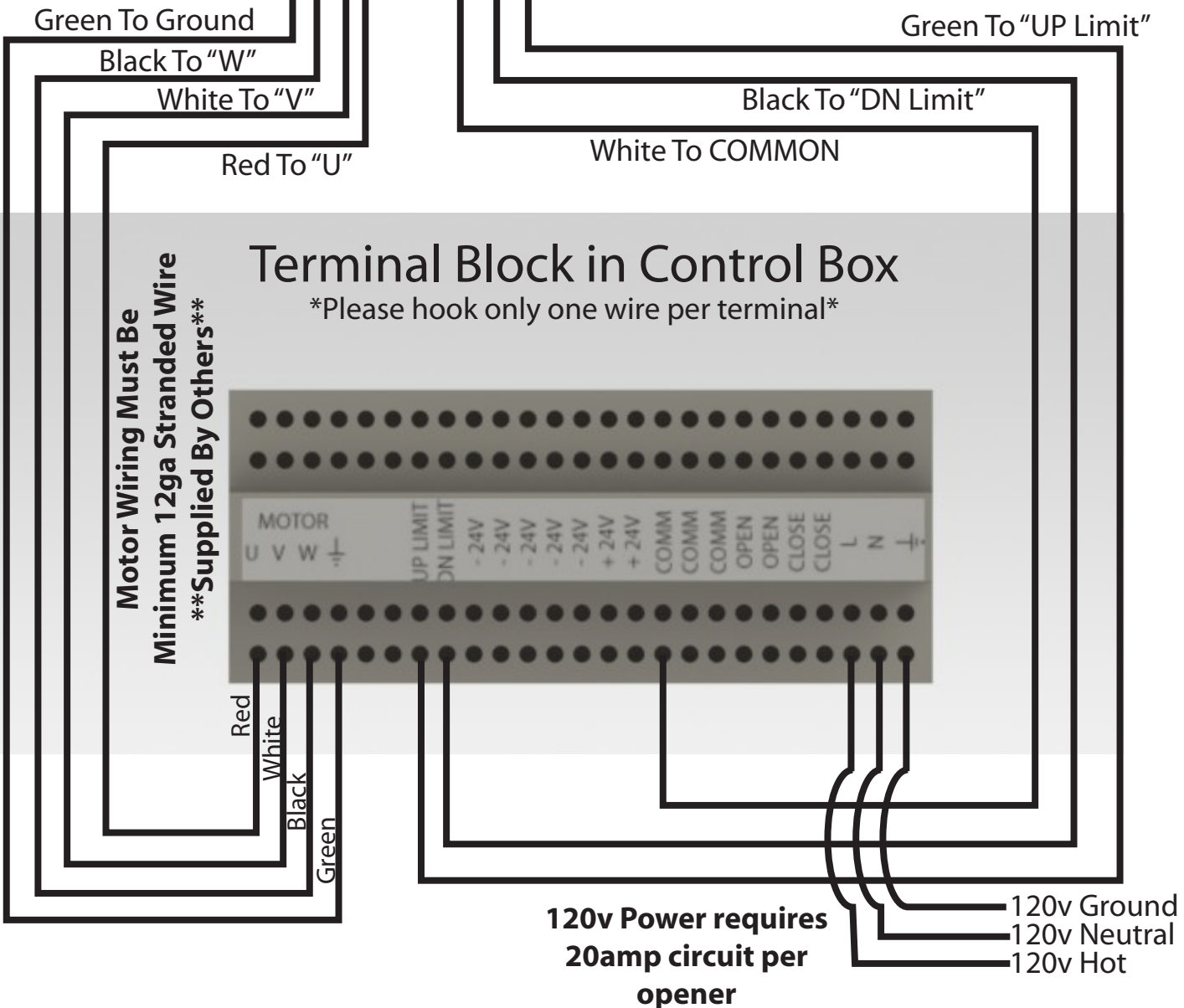
# XRS Plus Model Wiring Schematic

(See attached instructions for additional information)



Prewired "Pigtail"  
Supplied By Airlift

\*\*Yellow, Blue, Brown, Red, & Orange Wires are only used when additional inputs are required. If additional inputs regarding door position are needed please contact our technical support department for wiring instructions.



## STEP 2 - OPENER ADJUSTMENTS

This door opener allows the user to adjust the overall speed of the opener by using the arrow buttons on the VFD inside the control box. PLEASE NOTE that adjustments to the opener speed will require adjustments to the open and close limits on the opener. This is due to the fact that as the opener runs at a faster speed, the momentum of the door and the time it takes to slow the door down both increase. In other words, the faster the door moves, the more it will "coast" to a stop. Please use the following step by step instructions to properly set the opener limits.

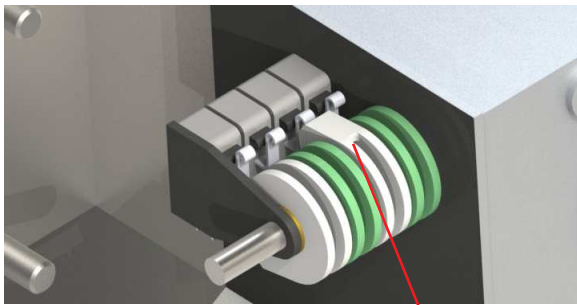
**\*\*CAUTION\*\*** During this entire procedure you must be ready to press the STOP button on the control box to prevent the door from travelling too far in either the open or close direction. Failure to do so may result in damage to the door and may require replacement or disassembly in order to fix the problem.

The opener limits are set by adjusting two of the four plastic cams at the top of the opener.

- The green cam closest to the opener sets the open limit.
- The white cam, 2nd closest to the opener sets the close limit.

The opener limits were preset at the factory to allow the door to travel at 20% opener speed. Follow these steps to set the door to open and close to the desired position.

2-1: Set the close limit by rotating the close limit cam (Inner White Cam) counterclockwise until it presses in on the limit switch lever.



White Close Limit Cam

2-2: Adjust the speed of the door to the desired setting by using the up & down arrows on the VFD.

**\*\*NOTE:**

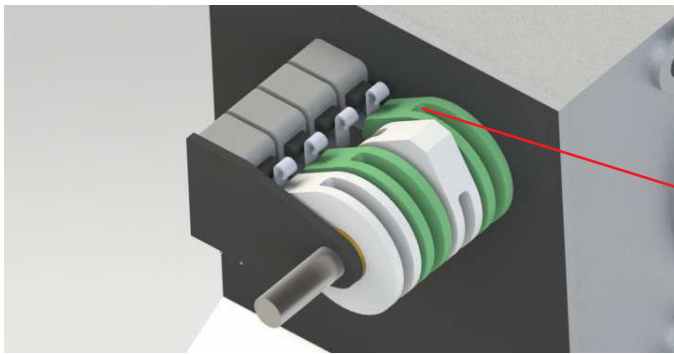
- For doors 12' high and under the maximum speed available is 100%.
- For doors over 12' high, the maximum speed available is 60%



2-3: You will now press open to position the door at the desired opening height.

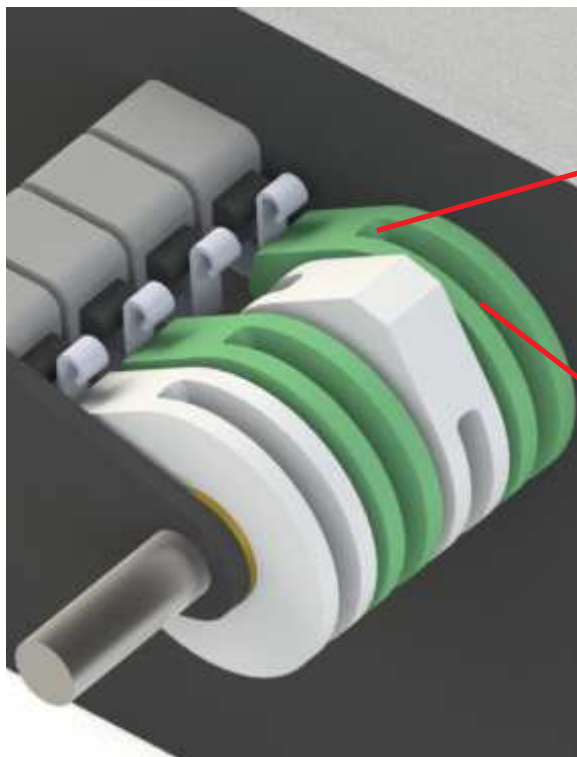
**\*\*CAUTION\*\*** The open limit has not been set. YOU MUST PRESS THE STOP BUTTON ON THE FRONT OF THE CONTROL BOX TO STOP THE DOOR ONCE IT REACHES THE DESIRED HEIGHT.

2-4: With the door in the desired open position. Adjust the open limit cam (Inner Green Cam) clockwise until it contacts the limit switch lever from the bottom side.



Open Limit Cam (Green)

2-5: You can now test the door and fine tune the open and close limits. If the limits do need to be adjusted, use the fine tune adjustment screw on each cam rather than the set screw. The fine tune screw is tucked into the point of the cam. See below.



Fine tune adjustment screw

Cam set screw

2-6: You may now proceed with installing any opener accessories such as safety eyes, remotes, etc.

2-7: Please remember that any change to the speed of the opener will require adjustment of the limit cams.

2-8: Finally, attach the pull ropes (Red & Green handles) to the release cables on the bottom of the opener gear head. When the release is pulled, the opener will be disengaged and the door can be run manually. To re-engage, simply pull the opposite rope until it stops.

# Banner Infrared Safety Eyes

