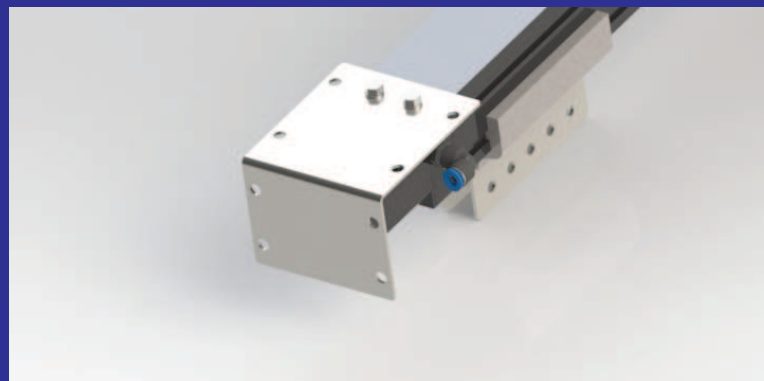
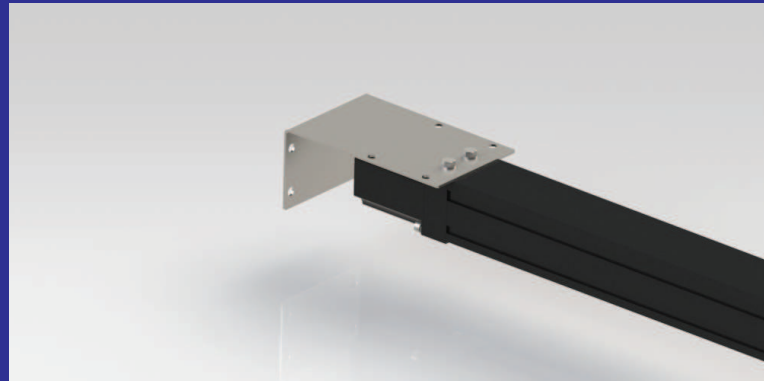




INSTALL GUIDE

Powerglide
Air Opener

Horizontal Mount



AIRLIFT DOORS, INC.
TOLL FREE: 888-368-4403
WWW.AIRLIFTDOORS.COM

****CAUTION****

Please read through these instructions before beginning installation of the air opener. Only trained professional installers should attempt installation of the Powerglide Air Opener from Airlift Doors, Inc. Improper installation of this product could result in personal injury or death.

Some steps in the installation process require lifting 50lbs overhead while standing on a ladder or other lifting equipment. A minimum of 2 people must be used along with the proper lifting and safety equipment.

Always inspect your tools and equipment to be sure all are in proper working condition before beginning the installation.

All electrical connections for the opener controls must be installed by a certified electrician.

All compressed air connections must be installed by a certified plumber.

All components and the size of the Powerglide Air Opener have been engineered according to measurements given to Airlift Doors, Inc. at the time of the order. No modifications must be made to any portion of the air opener, controls, or included components without first consulting with a factory representative. Failure to do so may alter the operation of the door and may create dangerous scenarios upon installation or normal operation that could result in personal injury or death.

Any modifications to the product without factory approval will void all factory warranties.

Powerglide Air Opener Horizontal Mount Installation Guide

STEP 1 - INSTALL MOUNTING BRACKETS

- 1-1: Lay the Powerglide cylinder on a flat surface with the carriage on the bottom and the flat surface on top.
- 1-2: Install the front mounting bracket to the top of the Powerglide using (2) 5/16" bolts and lock washers. (FIG. 1A)
- 1-3: Repeat Step 1-2 for the rear mounting bracket. When complete, the opener will look like FIG. 1B.

****NOTE:** The front and rear mounting brackets are identical. Either one can be mounted in either the front or rear position.

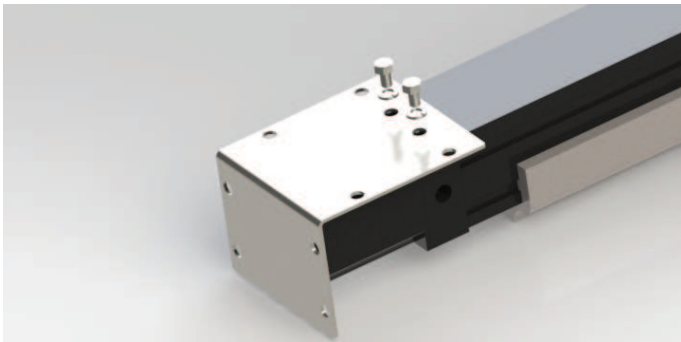


FIG. 1A



FIG. 1B

STEP 2 - INSTALL CARRIAGE BRACKET

- 2-1: Flip the opener over so the carriage is now on the top.
- 2-2: Mount the carriage bracket to the bottom of the carriage using (2) 5/16" bolts and lock washers. (FIG. 2A)

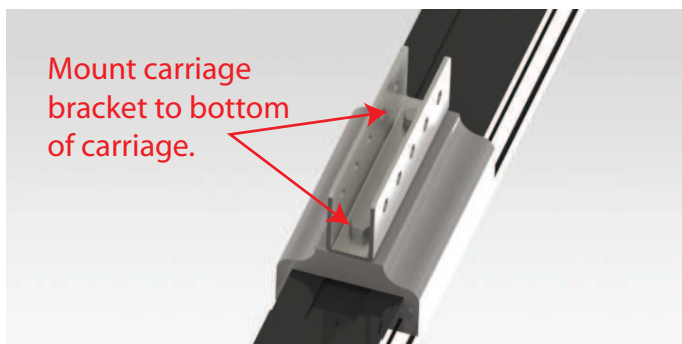


FIG. 2A

STEP 3 - INSTALL AIR FITTINGS

3-1: Install a 3/8" x 1/4" 90 deg. air fitting into the inlet ports at each end of the cylinder. (FIG. 3A)



3/8" x 1/4" 90 deg. fitting

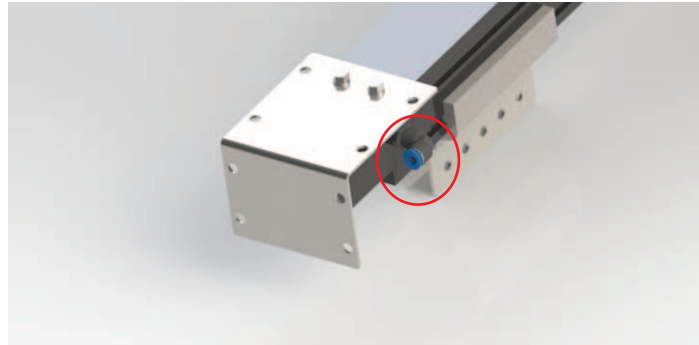


FIG. 3A

THIS AREA INTENTIONALLY LEFT BLANK
(Proceed to step 4 on next page.)

STEP 4 - OPTIONAL REAR EXTENSION BRACKET

****NOTE:** Step 4 is for the installation of the optional rear extension bracket. To determine if you need to use this bracket, first measure from the ceiling down to the torsion shaft on the header. If this distance is greater than 9" or the ceiling slopes up towards the center of the bay, proceed with step 4. If the measurement is 9" or under and the ceiling is the same height throughout the bay, skip step 4 and proceed to step 5.

4-1: Estimate what the distance will be from the ceiling down to the top of the opener.

4-2: Position the rear extension bracket against the rear mounting bracket and align the slots with the holes in the rear mounting bracket. (FIG. 4A)

4-3: The length of the rear extension bracket that extends above the top of the opener should match your estimate as closely as possible. (FIG. 4B)

4-4: Use (4) 3/8" carriage bolts and nuts to fasten the slots in the rear extension bracket to the 4 holes in the rear mounting bracket. (FIG. 4C)

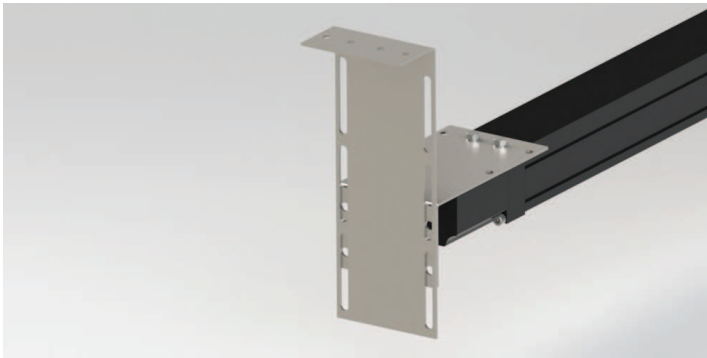


FIG. 4A

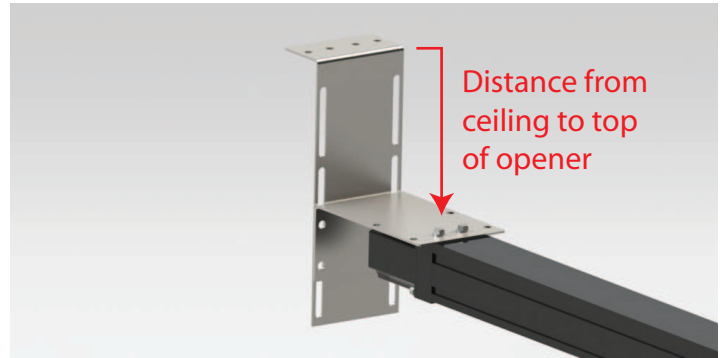


FIG. 4B

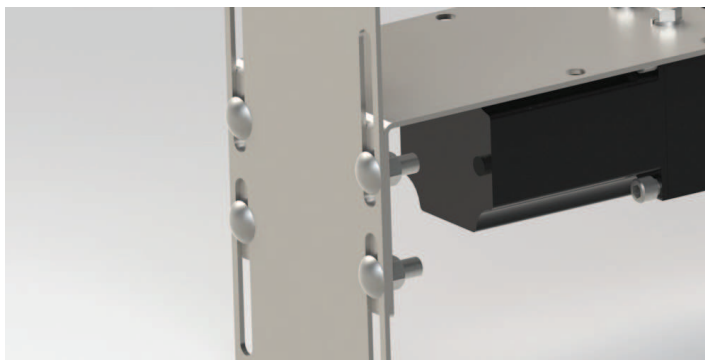


FIG. 4C

STEP 5 - PREPARE DOOR FOR OPENER INSTALL

5-1: Close the door and lock it down by using the slide lock (if installed) or by placing a vice grip on the door track just above one of the rollers.

5-2: Measure the door opening width and mark the center of the opening on the header just above the torsion shaft.

****NOTE**** On single center stile doors, this mark should line up with the center stile. On doors with an even amount of center stiles, you may either install a support in the center of the top section, or you may offset the opener right or left so it is in line with one of the stiles.

STEP 6 - MOUNT OPENER TO WALL & CEILING

6-1: Using two people lift the opener and position the front mounting bracket on your center mark. (FIG. 6A)



FIG. 6A

6-2: Fasten the front mounting bracket to the wall using wood lags or concrete anchors. ****NOTE**** The bottom of the opener can be mounted anywhere from 1" to 6" above the shaft. DO NOT mount the bottom of the opener more than 6" above the shaft. (FIG. 6B)

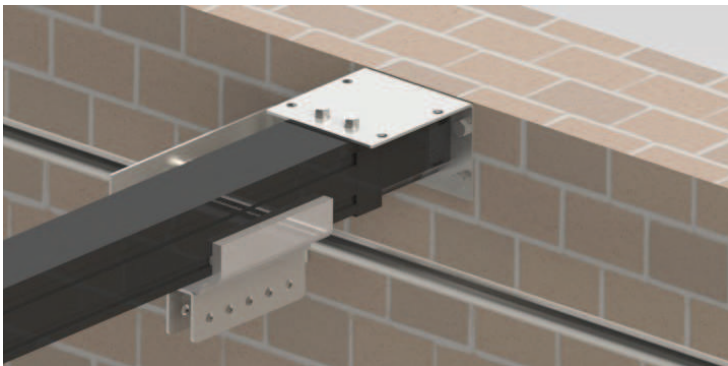


FIG. 6B

6-3: Fasten the rear bracket to the ceiling using wood lags or concrete anchors. The cylinder should remain relatively level after you fasten the rear bracket to the ceiling. Add the extension bracket as shown in step 4 if necessary. (FIG. 6C)

STEP 6 - MOUNT OPENER TO WALL & CEILING

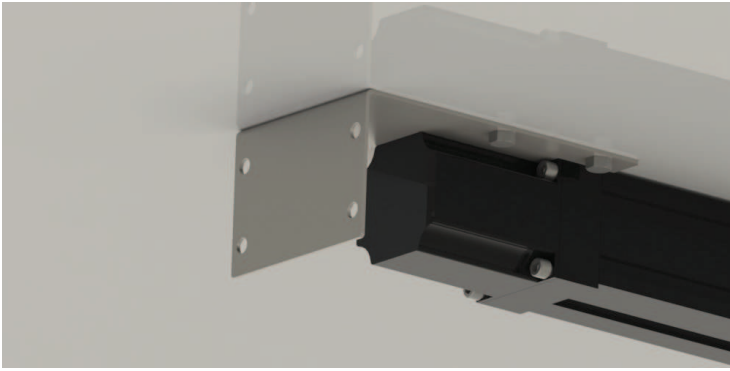


FIG. 6C

STEP 7 - CONNECT OPENER TO DOOR

7-1: Mount the door connection bracket to the center stile of the door using self tapping screws. Align the top mounting hole of the bracket with the top pre-drilled hole in the center stile. (FIG's. 7A & 7B)



FIG. 7A



FIG. 7B

7-2: Push the carriage all the way forward towards the door.

7-3: Fasten the straight operator arm to the carriage bracket on the bottom of the opener. Be sure to use the end of the straight arm with the single hole. Fasten the arm to the center hole of the carriage bracket using a 3/8" x 1-1/2" bolt and 3/8" lock nut. (FIG's . 7C & 7D)

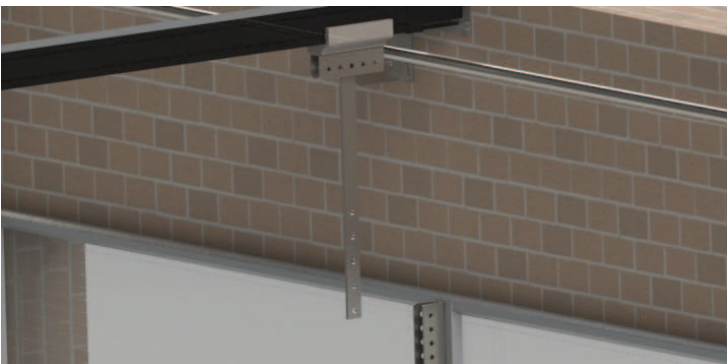


FIG. 7C



FIG. 7D

STEP 7 - CONNECT OPENER TO DOOR

7-4: Next, align the multiple hole section of the “J” arm to the holes in the straight arm. Adjust the “J” arm so the 90 deg “J” portion is aligned with any of the holes in the door connect bracket. (FIG. 7E)



FIG. 7E

7-5: Once you have all the mounting holes for the straight arm and “J” arm aligned and the door connect bracket is aligned, fasten the arms together using (2) 3/8” x 1” bolts, 3/8” lock washers, and 3/8” nuts. (FIG. 7F)



FIG. 7F

7-6: Finally, fasten the “J” arm to the door connect bracket using a 3/8” x 1-1/2” bolt and 3/8” lock nut. (FIG. 7G)



FIG. 7G

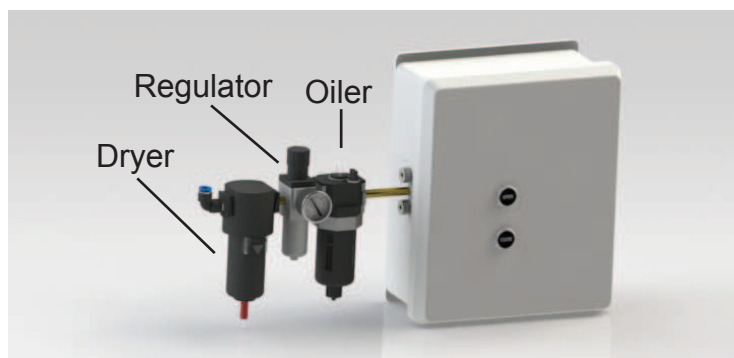
STEP 8 - INSTALL CONTROLS AND AIRLINE

****NOTE**** The following control instructions pertain only to installations with individual door control boxes. If installing multi-door control boxes or other non-standard control configurations, please consult the factory @ 1-888-368-4403 for information and instructions relating to your exact installation.

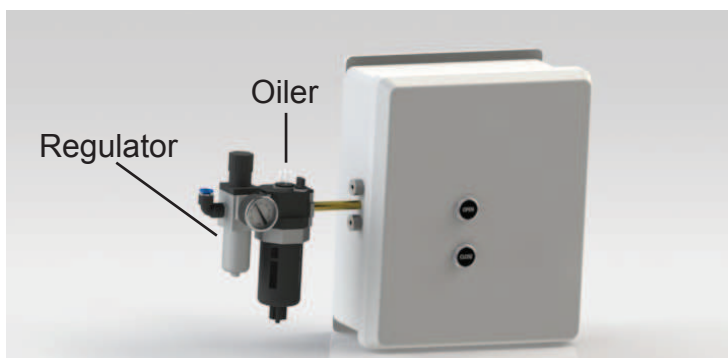
****NOTE**** These instructions assume that a main airline has already been plumbed from the air compressor to either side of the door.

8-1: Fasten the air regulator and any other accessories (air dryer, automatic oiler) to the main air inlet on the left side of your control box.

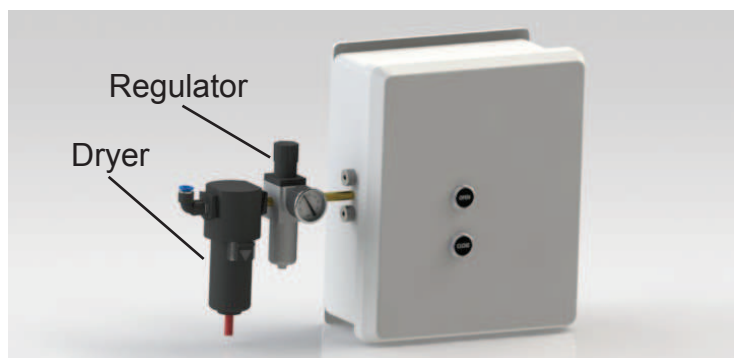
****NOTE**** It is important to install the regulator and any accessories in the correct order. Please see the different configurations below and match your installation accordingly.



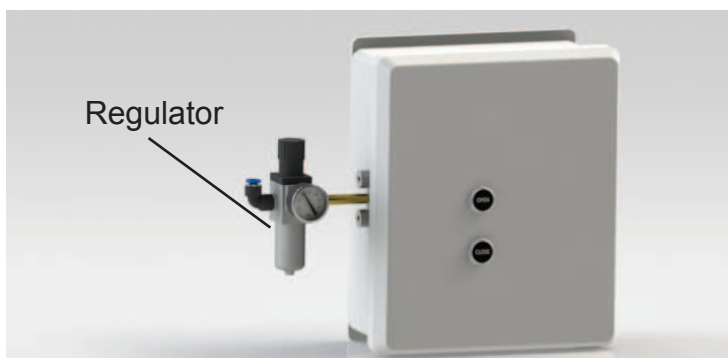
Option 1: Dryer - Regulator - Oiler



Option 2: Regulator - Oiler



Option 3: Dryer - Regulator



Option 4: Regulator

8-2: Mount the control box approximately 4' above the floor on the wall to which the main airline has been plumbed. (FIG. 8A)

8-2: Open the control box panel and run a 3/8" poly airline from the top outlet port of the valve to the rear air fitting on the Powerglide opener. (FIG's. 8B & 8C)

8-3: Run a second 3/8" airline from the bottom outlet port on the valve to the front air fitting on the Powerglide opener. (FIG's. 8D & 8E)

8-4: Connect your main airline to the air fitting on the left side of the air regulator attached to the control box. (FIG. 8F)

STEP 8 - INSTALL CONTROLS AND AIRLINE



FIG. 8A

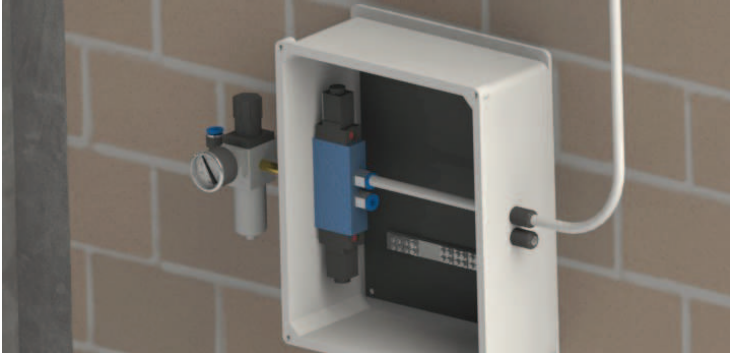


FIG. 8B

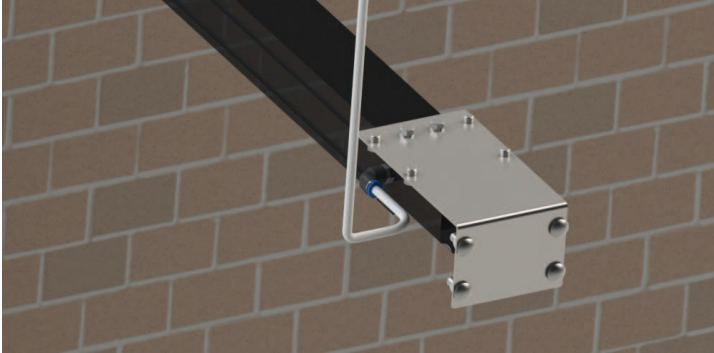


FIG. 8C

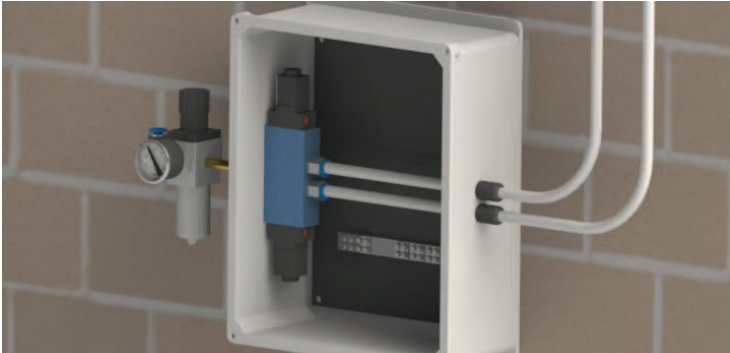


FIG. 8D



FIG. 8E



FIG. 8F

STEP 9 - INSTALL FLOW CONTROLS

9-1: Thread a brass flow control into each of the female threaded bushings on the left side of the control box. (FIG. 9A)

****NOTE**** For shipping the flow controls are generally packed in a separate, smaller cardboard box. This box will be packed in the larger box that the control boxes were shipped in.

9-2: Loosen the round thumb screw on each flow control approximately 3/4 of the way out. (FIG. 9B)



FIG. 9A

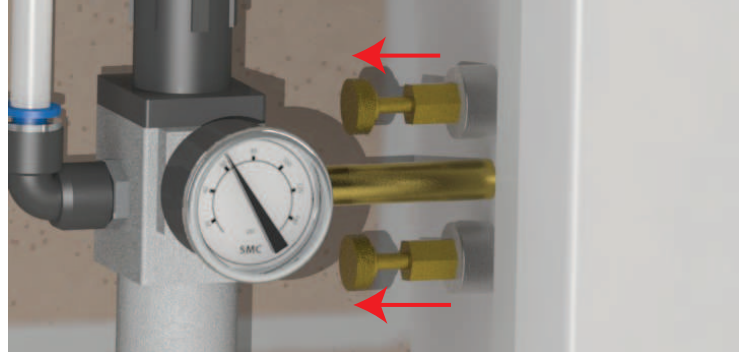


FIG. 9B

STEP 10 - ADJUST AIR PRESSURE AND TEST OPENER

CAUTION

****When adjusting the initial air pressure, be sure all personnel and equipment are clear of the door. The door may open when air pressure is first added to the regulator. The regulator is shipped from the factory with adjustment knob set at 0 psi.**

10-1: Increase the air pressure on the regulator by lifting up slightly on the top adjustment knob and turning the knob clockwise. Adjust the air pressure in the range of 40 - 80 psi.

10-2: Run the door open and closed to test for smooth operation.

10-3: See figures 10A and 10B for instructions on how to adjust the speed of the opener.

****Recommended closing speed is no more than 12" per second.**

To open the door faster, loosen the bottom flow control.

To open the door slower, tighten the bottom flow control.

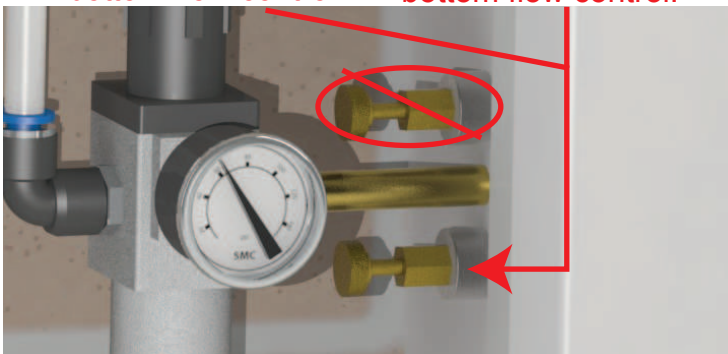


FIG. 10A (Opening Speed Adjustments)

To close the door faster, loosen the top flow control.

To close the door slower, tighten the top flow control.



FIG. 10B (Closing Speed Adjustments)

****IMPORTANT**** All control boxes supplied by Airlift Doors, Inc. require the use of a safety device to reverse the travel of the opener should the door opening become occupied by an obstruction. Only safety devices compatible with Airlift Doors controls may be used. Please note that without a compatible safety device installed, the opener will be unable to close.